

# Data Integration

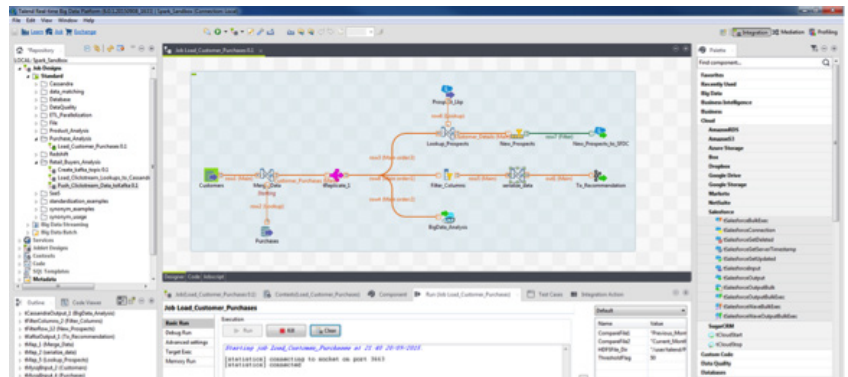
The fastest, most cost-effective way to connect data



## What it Does

### Integrate, Transform and Cleanse Data Between Systems

Talend Data Integration is an open and scalable data integration and data quality solution that easily integrates, cleanses and profiles all your data. Simple, graphical tools and wizards get you up and running quickly with native code generation and Continuous Delivery capabilities that streamline development.



## How it Works

### Develop 10 Times Faster and Do More with Your Data





Talend Studio features over 900 connectors to natively connect databases, flat files, cloud-based applications and more data. Graphical drag-and-drop tools and wizards speed design, test creation, and generation of code in the languages you need. Easily manage and monitor projects from simple, one-time ETL projects to complex, ongoing data synchronization projects requiring thousands of jobs. Teams leverage a shared repository and versioning tools for maximum productivity.

### Improve Data Accuracy and Increase Trust

Talend Data Quality offers a complete solution to profile, cleanse, anonymize and mask data, while monitoring data quality over time regardless of format or size. Through data de-duplication, validation, standardization and enrichment you create clean and high-quality data for access, reporting and analytics.

### Industry Leading Functionality at 1/5<sup>th</sup> the Price

Talend's open source, subscription model is disrupting the market and fundamentally lowering the cost of ownership for integration solutions. Unlike other vendors, Talend charges per developer with no hidden fees per connector or extra charges for capacity. Subscription pricing means customers only pay for what they need with dramatically lower up-front investments.

<h2>Compare</h2> <p>Choose a Data Integration solution to best fit your project and budget.</p>  <p><b>Webinar:</b>  <b>Talend Open Studio Data Integration for Dummies</b>            Go from zero to big data in under 10 minutes  <a href="https://info.talend.com/en_di_di_dummies">https://info.talend.com/en_di_di_dummies</a></p>	Features	Open Studio for Data Integration	Talend Data Integration	Talend Data Management Platform
	License	Apache	Subscription	Subscription
	Design Faster and Scale Easily	900+ Components & Connectors	+ Modeling, Continuous Delivery, Test Creation, and Live Debugging	+ Repository Manager & Visual Mapping
	Collaborate Better and Manage More		Manage Administration, Deployment, & Automate Tasks	+ High Availability, Load Balancing and Failover
	Increase Trust with Data Quality			Cleansing, Profiling, Stewardship
	Support	TalendForge Community, Help Center access	+ Guaranteed Response Times, Web & Email Support	+ Phone Support
	Indemnification/Warranty	—	✓	✓
		 <b>Free Download</b>	 <b>Free Trial</b>	 <b>Request Info</b>

*“We immediately saw the benefit of using Talend as our ETL tool. Data Warehouse Studio in conjunction with Talend is basically a fast-track solution and saved us both time and money. It’s proving to be 3 times faster than developing the same ETLs by hand and the ability to reuse Jobs, instead of rewriting them each time, is extremely valuable.”*

*Inderjit Chhatwal, Vice President, Allianz Global Investors*

<h2>Specifications</h2> <p>Talend Data Integration includes support of the following third party components, products and operating systems at time of publication. For full and up-to-date product documentation and release notes, visit <a href="http://help.talend.com">help.talend.com</a>.</p>  <p><b>Free Whitepaper:</b>  <b>Why All Enterprise Data Integration Products are Not Equal</b>  <a href="https://info.talend.com/enterprise_dataintegrationnotequal">https://info.talend.com/enterprise_dataintegrationnotequal</a></p>	<h3>Supported Operating Systems</h3> <ul style="list-style-type: none"> <li>· CentOS Linux</li> <li>· OS X</li> <li>· Redhat Enterprise Linux</li> <li>· Solaris</li> <li>· SUSE Linux</li> <li>· Ubuntu Linux</li> <li>· Microsoft Windows</li> </ul> <h3>Database and Storage Connectivity</h3> <p>Amazon RDS, Redshift and S3, Apache HBase, AS400, DB2, Derby DB, Exasol, eXist-db, Firebird, Google Storage, Greenplum, H2, HIVE, HSQLDB, Informix, Ingres, InterBase, JavaDB, JDBC, MariaDB, MaxDB, Microsoft OLE-DB, Microsoft SQL Server, MySQL, Netezza, Oracle, ParAccel, PostgreSQL, PostgresPlus, SAS, SQLite, Sybase, Teradata, VectorWise, Vertica, Windows Azure Blob Storage</p>	<h3>Supported SaaS and 3rd Party Applications</h3> <p>Access over 900 pre-packaged integration connectors, components and templates, including:</p> <ul style="list-style-type: none"> <li>· SaaS Connectors: Marketo, Salesforce and Salesforce Wave, NetSuite, MS CRM &amp; AX</li> <li>· Packaged Application Connectors: SAP (table extract, BAPI, IDOC), Sugar CRM, Microsoft, Sage X3, CentricCRM, Vtiger CRM, Open Bravo</li> <li>· Technical Connectors: Amazon S3, Box, Alfresco, Dropbox, ElasticSearch, GoogleDrive, Email (SMTP), FTP/SFTP, REST, Splunk</li> </ul> <h3>Supported Messaging Systems</h3> <p>JMS, Apache Kafka</p>	<h3>Talend Data Management Platform also includes:</h3> <p>Address Validation, Standardization and Enrichment</p> <ul style="list-style-type: none"> <li>· Through a combination of components and services, Talend supports the following address validation partners: Google, Loqate, QAS, Melissa Data and QAS</li> <li>· Matching Algorithms: Exact Match, SoundEx, SoundEx FR, Levenshtein, Metaphone, Double Metaphone, Jaro, Jaro-Winkler, Q-grams Custom/ User-Defined</li> </ul>
---	--	---	---

© 2015 Talend All rights reserved.