



Talend ESB

Enterprise Edition for Data Services

Easily integrate data and systems across functional, enterprise, and geographic boundaries.

Talend ESB Enterprise Edition for Data Services combines application integration with operational data management.

Talend® ESB Enterprise Edition (EE) for Data Services is a reliable and scalable enterprise service bus (ESB) that allows development teams to holistically address integration projects – combining application integration and data management for complex, heterogeneous IT environments. Talend ESB EE for Data Services frees data management processes that are traditionally bound to specific applications by abstracting them as standards-based services that can be reused by other applications. The reuse of data services across multiple applications maximizes the value of initial investments in standalone data integration solutions.

Talend ESB EE for Data Services incorporates a standards-based ESB that offers a connectivity layer to integrate distributed systems across functional, enterprise, and geographic boundaries. Capabilities include messaging, Web services, intelligent routing, data enrichment and data transformation. Powered by Apache open source integration projects, Talend ESB makes enterprise-class integration accessible by delivering a cost-effective and easy-to-use way to integrate and expand systems and applications.

Talend ESB EE for Data Services is designed for application teams that need to coherently manage integration projects across production environments. It is supported by the same unified platform that underlies Talend's data management products, and provides a common environment for users to manage the entire lifecycle of application integration and data services. This makes the process of synchronizing data between operational applications and across enterprise boundaries much easier.

Versatile and Flexible Web Services

Based on the Talend ESB Standard Edition (SE), Talend ESB EE for Data Services allows Java developers to quickly create RESTful and SOAP Web services as part of a service-oriented architecture (SOA). It offers a modular, lightweight architecture that allows users to build composite applications for reuse across multiple projects.

With Talend ESB EE for Data Services, developers can incrementally add advanced features such as data encryption, remote service discovery and identity management. For example, Talend ESB EE for Data Services includes a comprehensive set of features for building secure Web service applications using established industry standards for XML encryption, authentication and authorization. Developers can configure and setup these features to allow consumers to be configured for automatic access.

Easy-to-use Graphical Tooling

Talend ESB EE for Data Services includes an innovative, Eclipse-based tooling environment for modeling, configuring and deploying integration solutions and data services. Talend ESB Studio Enterprise Edition (EE)

eliminates lengthy learning curves and speeds time to deployment by making developers more productive—enabling organizations to rapidly respond to business requirements.

Users simply drag-and-drop components and connectors onto a graphical workspace, draw connections and relationships between them, and select them to set

KEY BENEFITS

Multi-User Development Environment

Share integration artifacts and collaborate on projects across teams through a shared repository and multi-user development environment

Comprehensive Management Capabilities

Easily monitor application and data service events and drill-down into individual service statistics for in-depth analysis of inter-process service activity

Effortless Data Services Creation

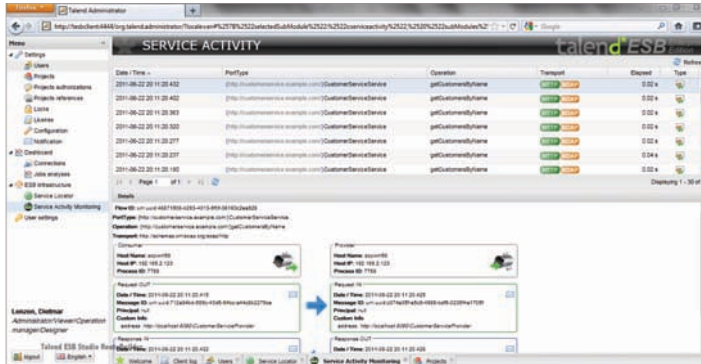
Maximize the value of data management investments by abstracting them as standards-based services

Integration without Coding

Quickly create integration projects and data services with an easy-to-use, graphical interface based on Eclipse

properties. Talend ESB Studio EE provides a functional view of the actual integration processes, supporting rapid prototyping and dramatically reducing development and testing cycles. Developers can run from within Eclipse and visually see the execution flow, with live statistics of message flow activity between components within the routes.

Talend Administration Center



Through the Talend Administration Center, users can drill-down into individual service statistics to perform in-depth analysis of inter-process service activity – including service response times, traffic patterns, auditing and more.

Effortlessly Produce Data Services

Talend ESB Studio EE also includes a Data Service Builder that allows users to effortlessly combine data integration with a Web service using a graphical palette of components and connectors. Users can leverage a WSDL-first approach to integration to efficiently deploy multiple data services behind a single interface on a common ESB runtime. Based on the industry's leading open source data integration tool, Talend Integration Suite Studio, Talend ESB EE provides access to a library of over 500 connectors supporting all types of sources and targets for data integration, migration or synchronization.

Support for Apache Camel Routes

Talend ESB EE contains the Talend ESB Route Builder for the design of integration solutions based on Enterprise Integration Patterns (EIPs) – a standard set of integration templates used to address standard integration needs. The Route Builder allows users to drag-and-drop EIPs from a palette onto a graphical workspace and configure them, eliminating the need to write code or use a domain specific language (DSL). Visibility into live statistics of message flow activity within a specific EIP enables rapid prototyping for developers, dramatically reducing development and testing cycles.

Manage Integration Across the Enterprise

Talend ESB EE facilitates the management of development projects across teams and integrated production environments across the enterprise, through the Talend Repository and enterprise management capabilities. Talend ESB EE supports the management of services through its Service Activity Monitoring functionality, which captures events and stores this information to facilitate in-depth analysis of service activity.

Facilitate Team Collaboration

Talend ESB EE enables collaboration between team members by allowing them to store and share integration project, integration patterns, metadata and all other items in a shared repository. This enables ESB development and operations artifacts to be stored and shared among a team of developers or administrators, further facilitating best practices and collaboration in their integration projects.

Unified Administration

Talend ESB EE includes the Talend Administration Center, a graphical console that facilitates administration of production integration environments by providing service activity monitoring and service locator capabilities. Talend Administration Center allows users to monitor service and data service events, through a single console. It also delivers a high-level view from which users can drill-down into individual service statistics, to perform in-depth analysis of inter-process service activity – including service response times, traffic patterns, auditing and more.

Enterprise-class Reliability and Security

All hardware and software – no matter how reliable – eventually fail. Through the Service Locator, Talend ESB EE provides automatic and transparent failover and load balancing via dynamic endpoint registration and lookup with Apache Zookeeper. The Service Locator maintains the availability of the service to help meet demands and service level agreements (SLAs). Talend ESB EE also includes a Security Token Service (STS) Framework to allow clients and services to securely and transparently authenticate during connections – without custom coding. The STS Framework supports Security Assertion Markup Language 2.0 (SAML 2.0) to federate security credentials and can be extended to create custom STS, tailored to meet the needs of existing security environments.

Start Today

For more information about Talend ESB EE for Data Services, contact Talend today.

SPECIFICATIONS

Support for Standards

- JAX-WS - Java API for XML-Based Web Services (JAX-WS) 2.1 - JSR-224
- Web Services Metadata for the Java Platform - JSR-181
- JAX-RS 1.1 - The Java API for RESTful Web Services - JSR-311
- SAAJ - SOAP with Attachments API for Java (SAAJ) - JSR-67
- Basic support: WS-I Basic Profile 1.1
- Quality of Service: WS-Reliable Messaging 1.0
- Metadata: WS-Policy, WSDL 1.1 - Web Service Definition Language
- Communication Security: WS-Security, WS-SecurityPolicy, WS-SecureConversation, WS-Trust (partial support)
- Messaging Support: WS-Addressing, SOAP 1.1, SOAP 1.2, Message Transmission Optimization Mechanism (MTOM)

Support for Transports, Bindings, Data Bindings and Formats

- Bindings: SOAP, REST/HTTP
- Data bindings: Aegis, JAXB 2.1, SDO, XMLBeans
- Formats: XML, EDI, JSON, SOAP, CSV, JAXB, HL7
- Transports: HTTP, Servlet, JMS, in-VM, TCP, SSL, NIO, UDP, multicast, JGroups, JXTA transports and Jabber transports
- Extensibility API allows additional bindings, enabling additional message format support such as CSV and fixed record length

Flexible Deployment

- Lightweight containers: deploy services in OSGi, Tomcat or Spring-based containers
- J2EE integration: deploy services in J2EE application servers such as Apache Geronimo, JOnAS, JBoss, WebLogic, and WebSphere
- Stand-alone Java client/server

Support for Programming Languages

- JAX-WS 2.1
- JAX-RS for RESTful clients
- XML messaging API
- CORBA
- Scala DSL, XQuery, SQL, XPath
- Scripting languages: Groovy, JavaScript, ECMAScript, PHP, and Ruby

Enterprise Integration Patterns

Talend Integration Factory supports the key Enterprise Integration Patterns (EIPs) for:

- Messaging Systems
- Messaging Channels
- Messaging Construction
- Messaging Routing
- Messaging Transformation
- Messaging Routing
- Messaging Endpoints
- System Management